

# Greater New Bedford Regional Refuse Management District

300 Samuel Barnett Boulevard, New Bedford, MA 02745

[www.gnbrmddistrict.org](http://www.gnbrmddistrict.org)

## Crapo Hill Landfill- Cell 7 Fact Sheet

*To receive any of this information in another language, please reach out to the District contact on the bottom of page 4.*

*Para recibir esta información en Español, consulte la información de contacto del Distrito en la página 4.*

*Para traduzir esta informação em Português, por favor contate o representante do Distrito indicado ao final da página.*

### Introduction

The Greater New Bedford Regional Refuse Management District (the District) is proposing to construct a new waste disposal cell (Cell 7) located entirely within the original site assigned area at the Crapo Hill Sanitary Landfill (Landfill). This cell - a carefully built section of the lined landfill that safely holds waste in place - is being designed according to solid waste regulations (310 CMR 19.00). The Massachusetts Department of Environmental Protection (MassDEP) is currently reviewing the District's solid waste application requesting an Authorization to Construct (ATC) this landfill cell.

The District is a public entity that owns and operates the Landfill and provides waste reduction and recycling education and outreach support for its Member Communities - the Town of Dartmouth and the City of New Bedford. The District is committed to providing reliable, cost-effective, and environmentally responsible municipal solid waste disposal services and to maximizing the Landfill's financial benefits to its members. The Landfill allows the District to provide disposal services for its members at a significant discount compared to market rates: District Members currently save **more than \$3 million annually** and have saved an estimated **\$78 million since the Landfill opened** in 1995. These savings directly benefit local taxpayers and municipal budgets while supporting essential public services.

### Community Event

The District is offering an organized tour of the Landfill and informational session related to this ATC permit application on September 13, 2025, from 9:00 am-12:00pm at the Landfill- 300 Samuel Barnett Blvd, New Bedford MA 02745. The District requests pre-registration for this tour to assist with planning logistics by visiting this [link](#), which is available on our website [www.gnbrmddistrict.org](http://www.gnbrmddistrict.org), by calling the administrative office at 508-763-5924, or by emailing [lferreira@gnbrmddistrict.org](mailto:lferreira@gnbrmddistrict.org). Please notify us if any special accommodations are needed as soon as possible.

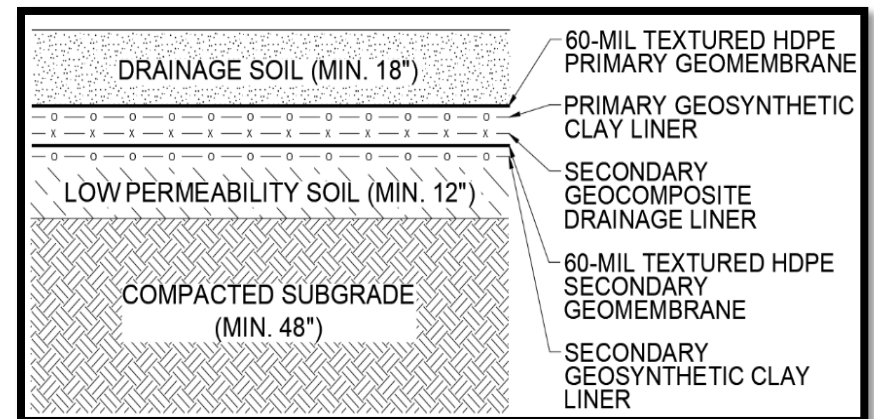
## Facility and Project Information

The Crapo Hill Landfill is an active, fully lined (i.e., contained) facility that provides cost-effective, safe, and responsible solid waste management for the District's Member Communities. Currently, it also provides solid waste disposal for nearby municipalities and haulers as a means to subsize the costs of disposal for District Member Communities. Cell 7 is part of a longstanding plan and is part of the originally proposed landfill capacity that has always been anticipated by the District. Cell 7 will maintain all core elements of the currently permitted landfill operation at Crapo Hill. Cell 7 will remain fully within the Landfill's approved site boundaries and within the District's MassDEP-approved total landfill area. Cell 7 is expected to occupy approximately 3.5 acres and to provide at least seven additional years of capacity for District Members. This will help ensure that the Landfill can continue delivering this critical public service at affordable rates for its Member Communities for a minimum of 13 more years.

The Landfill is permitted to accept up to 574 tons of municipal solid waste per day. The District accepts less than this to preserve landfill capacity for future use by its Member Communities and to continue the associated financial benefits being provided.

## Environmental Protection and Notable Features

Crapo Hill Landfill is a state-of-the-art, fully lined facility committed to safely disposing of local municipal solid waste. Cell 7 will include a double-liner system and has been designed for full compliance with MassDEP landfill design and environmental protection standards, including a groundwater protection system, leachate collection and removal system, a system to manage landfill gas (which is the gas generated when organic solid waste decomposes), and a stormwater management system. Although no hazardous waste has been or will be accepted at the Landfill, the double-liner system design (pictured to the right) meets the stricter requirements imposed on hazardous waste landfills for added environmental protection.



The District is aware of the potential for odors and other nuisance conditions resulting from landfill operations and makes conscious efforts to minimize potential impacts to our neighbors. Landfill gas, which is a primary source of odor at the Landfill, is collected 24/7 and directed to an on-site [landfill gas-to-energy facility](#). This facility supplies enough electrical energy to the local grid to power an estimated 1,700 homes! The District has full-time staff dedicated to the landfill gas management system and uses innovative technology from [LoCi Controls](#) to help maximize the collection of landfill gas and to help minimize the potential for landfill gas to escape into the air, which is sometimes referred to as "fugitive emissions". **The District maintains a 24-hour odor hotline (508-763-2423) and encourages neighbors to call if odors are suspected to be coming from the landfill.**

## **Waste Reduction, Recycling & Composting**

While the construction of Cell 7 is critical to ensuring uninterrupted service, the District also recognizes that disposal capacity is only one part of a larger solution. The District has full-time staff who work closely with staff from the City of New Bedford and the Town of Dartmouth to offer residents a variety of opportunities to divert materials from the landfill, to educate about proper recycling, and to handle waste safely. Options for organic waste diversion include low-cost compost bins, Food Waste Drop-Off Program, Curbside Food Scraps Collection Program, and the FoodCycler In-Home Food Scraps Diversion Pilot Program. The District accepts leaf and yard waste from its Member Communities and processes it into compost as an additional service to its members. Finished compost is available at the Landfill for free to Dartmouth and New Bedford residents.

The District also holds events including Compost Bin Days, Paper Shredding Days, and Household Hazardous Waste Drop-Off Days. District staff communicate with the public through social media, flyers, press releases, presentations, and a biannual newsletter. For more information on the District's ongoing efforts to reduce waste and recycle properly, please visit [gnbrmdistrict.org/waste-reduction-recycling/](https://gnbrmdistrict.org/waste-reduction-recycling/) or email [Marissa@gnbrmdistrict.org](mailto:Marissa@gnbrmdistrict.org)

## **Community Input and Public Review**

The District's ATC permit application is currently available for public review on the District's website [gnbrmdistrict.org](https://gnbrmdistrict.org). The District welcomes and values comments from the public related to this Cell 7 permit application. All comments received will be carefully reviewed and considered as part of this permitting process. Comments may be submitted in person at the landfill tour & informational session on September 13<sup>th</sup>, by mail to: Greater New Bedford Regional Refuse Management District, 300 Samuel Barnet Blvd, New Bedford MA 02745, or online by using [this link](#) or visiting the District's website [gnbrmdistrict.org](https://gnbrmdistrict.org).

Comments will be received until September 30, 2025. Comments must relate to the proposed Cell 7 project and its potential environmental, community, or operational impacts. After the close of the comment period, the District will prepare a summary of the feedback received and provide written responses to key themes and questions. This summary will be posted on the District's website so the community can see how comments were addressed. The District is committed to ensuring that neighbors remain informed, heard, and engaged throughout this process. Additional contact information for the District is provided below.

After MassDEP completes its review of the permit application, the agency will issue a proposed decision, subject to a 30-day public comment period. This information will be posted on the EEA ePLACE Public Access Portal: <https://eeaonline.eea.state.ma.us/EEA/PublicApp/>. On the main EEA ePLACE Portal page, click on the orange "Search and/or Comment" button, then on the name of the applicant/facility on the resulting page.

## Contact Information

### Greater New Bedford Regional Refuse Management District

Anthony Novelli, Executive Director

Phone: 508-763-5924

Email: [anthony@gnbrmdistrict.org](mailto:anthony@gnbrmdistrict.org)

Website: [www.gnbrmdistrict.org](http://www.gnbrmdistrict.org)

### MassDEP

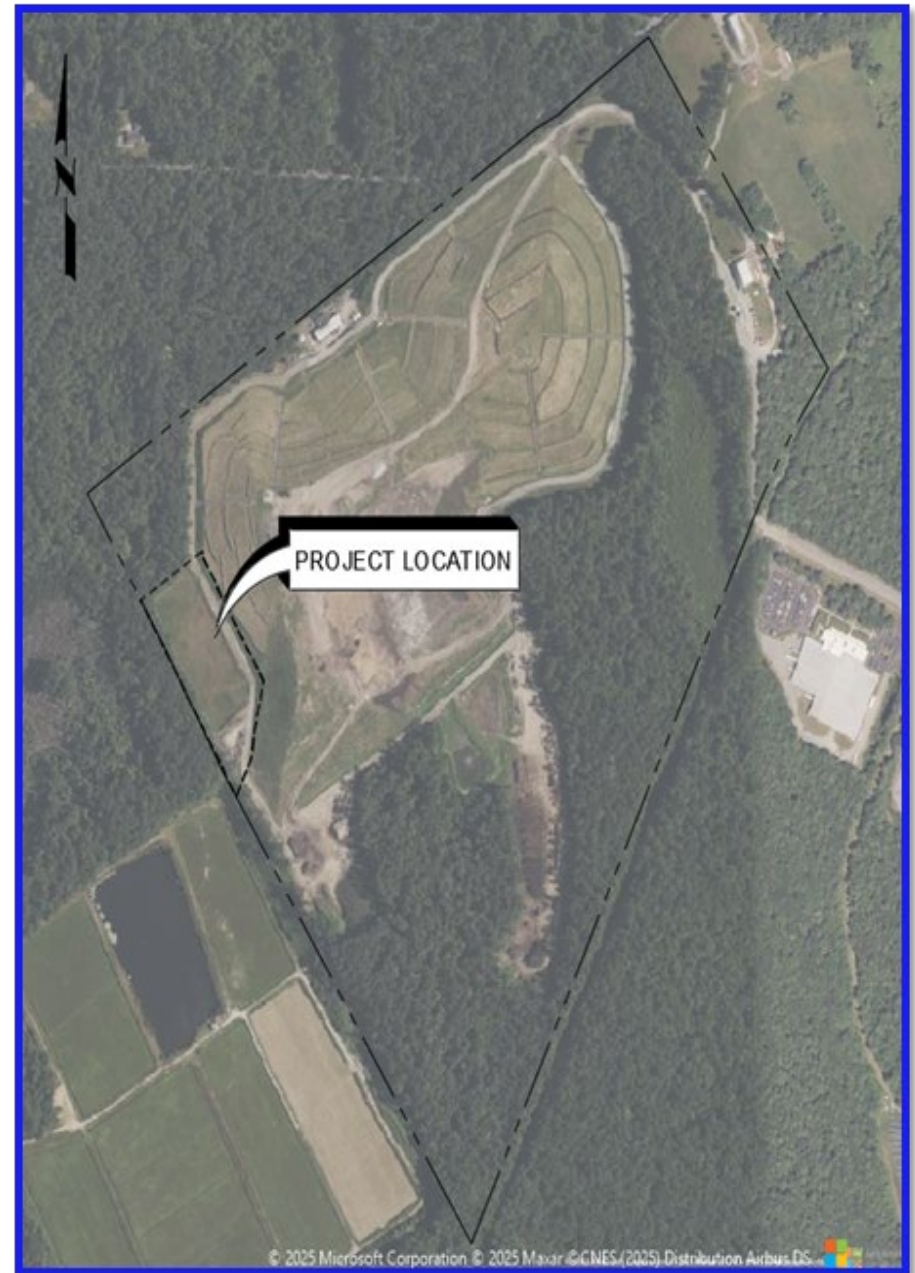
Jenni Wharff, Acting Chief

Solid Waste Management Section

Bureau of Air and Waste

Phone: 617-620-3277

Email: [jennifer.wharff@mass.gov](mailto:jennifer.wharff@mass.gov)



Cell 7 location within the landfill's site assigned boundaries.